

# FirstNuclear™

## *The Gold Standard in Office Based Nuclear Cardiology.*

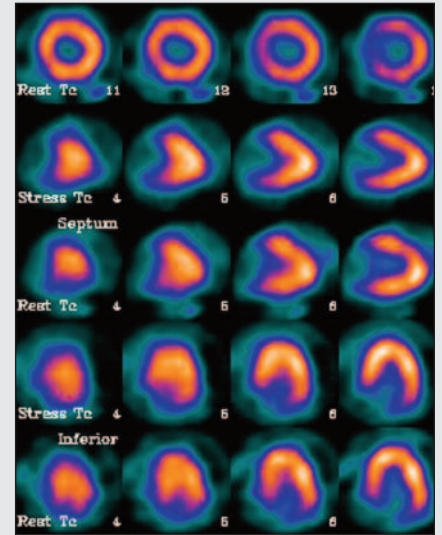
FirstNuclear™ was developed over 24 years ago in collaboration with DuPont Pharmaceuticals, ADAC Laboratories and American Diagnostic Medicine (ADM) the leader in total imaging solutions. Together we created a standard of excellence that continues to provide the most sophisticated nuclear medicine services available nationwide.

FirstNuclear™ is one of the largest and most trusted names in nuclear imaging. We have performed **over 500,000** nuclear studies across the United States. With our complete turnkey program, we will ensure that you are receiving the most comprehensive imaging service available. Our program was designed with you, our customer, and with your patients in mind; we adapt to suit your needs. That is why FirstNuclear™ is the choice as your provider.

FirstNuclear™ is a total comprehensive program that provides state-of-the-art nuclear imaging in your facility. With this complete turnkey program, you can now establish an in-house nuclear cardiology department without the usual financial risks, staffing costs and administrative headaches.

Today we serve hundreds of clients nationwide, each with unique arrangements specific to respective business needs and market demands. You can be confident in our commitment to client satisfaction and to meeting your specific needs with solutions that address your technology and cost concerns.

By tailoring solutions to meet those specific needs, we have successfully assisted hundreds of clients in expanding their service levels, upgrading technology, increasing returns, minimizing risks and conserving capital.



American Diagnostic Medicine



Most Trusted Name in Diagnostic Imaging Solutions

[www.admaccess.com](http://www.admaccess.com) • 1.800.262.9645 Ext. 106



## FirstNuclear™



### *The Gold Standard in Office Based Nuclear Cardiology.*

FirstNuclear™ is a full spectrum approach that provides state-of-the-art nuclear imaging in your imaging center or physicians office. With our complete turnkey program, you can establish an in-house nuclear cardiology department without the usual financial risks and administrative headaches.

#### **WHAT ARE THE BENEFITS?**

Improved patient care, convenience, marketing, educational support, complete nuclear cardiology department management, more accurate diagnosis, increased patient referrals, non-obsolescence software and hardware upgrades.

#### **STATE-OF-THE-ART SPECT IMAGING**

You select the type of SPECT equipment that best fits your needs: single head or dual-head. All shipping and installation costs are included.

#### **HOT LAB EQUIPMENT & ACCESSORIES**

Everything needed to safely operate the nuclear department is provided, including the dose calibrator, survey meter, wipe test counter, lead shielding, lead containers, radiation signs and check sources.

#### **FACILITY SITE PLANNING**

Our site-planning department will provide all necessary requirements needed for the proper installation and operation of the equipment, including electrical requirements, system layout, and floor loading.

#### **RADIATION SAFETY MANAGEMENT**

We will provide and pay for quarterly health physics, performed by our certified nuclear physicists.

#### **NRC / STATE RADIOACTIVE MATERIALS LICENSE**

We will obtain all necessary documentation in order to process and obtain a Radioactive Materials License from the Nuclear Regulatory Commission (NRC) or Agreement State. We will also pay for all initial fees as well as all annual renewal fees.

#### **CERTIFIED NUCLEAR MEDICINE TECHNOLOGIST**

We will provide staffing to perform the exams and manage the department. Our technologists are Board-Certified in nuclear medicine and have extensive experience in nuclear imaging and handling of radioisotopes.

#### **BILLING AND PROCEDURE CODING**

We will provide up-to-date procedure coding.

#### **RECORD KEEPING TO MEET FEDERAL & STATE REGULATIONS**

All record keeping is maintained to meet or exceed NRC and STATE regulations, OSHA and JACHO requirements. Customer-specific policy and procedure manuals as well as quality assurance procedures are also provided.

#### **MARKETING SUPPORT**

A customer-specific marketing program can be implemented to ensure maximum utilization.

#### **INTERPRETATION / OVERREADS**

Optional film interpretation or over-reads by Board-certified nuclear medicine physicians.

#### **ICANL ACCREDITATION**

Our ICANL accreditation program will meet or exceed the most recent imaging standards for your facility to demonstrate an exceptional level of patient care.

