

FirstNuclear In-Office



*Imaging where you need it.
when you need it.*

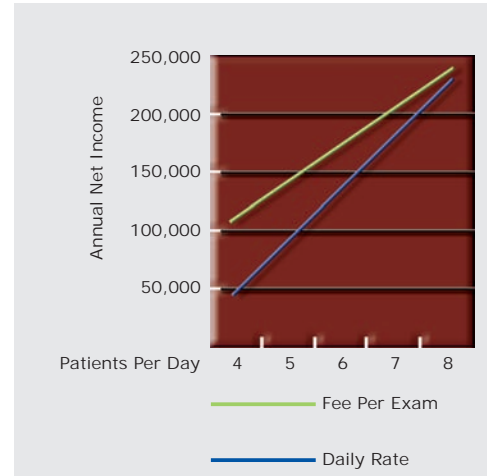
**Flexibility, Reliability, Cutting Edge Technology,
and Certified Professional Staff in Your Office Now...
with Confidence.**

FirstNuclear™ In-Office is a total comprehensive program that provides state-of-the-art nuclear imaging right in your own facility. With this complete turnkey program, you can now establish an in-house nuclear cardiology department without the usual financial risks, staffing costs and administrative headaches. Our systems fit easily into a 7' x 9' room, and provide excellent diagnostic accuracy. Ultra fast acquisition times ensure patient comfort and high throughput. Schedule your patients when you need to, where you need to.

Fee per Scan Imagine paying only for patients you schedule and scan. **FirstNuclear™ In-Office** eliminates the need to over schedule nuclear scanning days just to break-even as compared to flat rate daily plans. It's as simple as that. Scan who you need to, when you need to, where you need to.

Quality Patient Care Consistent quality control is secured by keeping the patient exams in your office. Timely turnaround of interpretations and a highly skilled staff further guaranty quick diagnosis and less patient stress.

Diagnostic Accuracy We provide a vast array of board certified specialty physicians for over-read of studies, and diagnostic image quality management. Staff physicians maintain equipment compliance along with state and federal licensure requirements.



Based on average California Medicare reimbursements. Annual net income is customers income after all costs based on one day a week for 50 weeks. ADM does not guarantee patient volume. Results may vary based on location.



American Diagnostic Medicine



Most Trusted Name in Diagnostic Imaging Solutions

www.admaccess.com

FirstNuclear In-Office



*Imaging where you need it.
when you need it.*

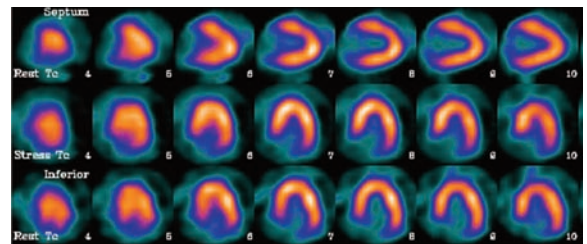
***Flexibility, Reliability, Cutting Edge Technology,
and Certified Professional Staff in Your Office Now...
with Confidence.***

FEATURES:

- State-Of-The-Art SPECT Imaging in your office
- All Hot Lab Equipment included (dose calibrator, survey meter, lead shielding, etc.)
- Transportation of equipment, personnel, and supplies to your office
- Board Certified Nuclear Medicine Technologists
- Nurse or EMT for Stress Exams
- All Record Keeping to meet State & Federal Regulations
- Radiation Safety Management and Licensure
- Delivery & Disposal of All Radiopharmaceuticals
- Billing & Procedure Coding
- Optional board certified physician for over-read assistance
- Radiopharmaceutical scheduling and delivery
- Comprehensive cardiac imaging protocols
- ICANL Accreditation Preparation (if selected)

BENEFITS:

- Flexible to meet your needs & those of your patients
- Fast scan time for improved patient comfort
- Improved Patient Care & Convenience
- Reduced Financial Risk - No Up Front Costs
- Non-Obsolescence: Software & Hardware Upgrades
- Marketing & Educational Support
- Safe Harbor Compliance
- Complete Nuclear Department Management
- Fixed Fee-Per-Exam Charges
- Continued Practice Growth
- Increased Patient Referrals
- ICANL Accreditation Preparation



American Diagnostic Medicine



Most Trusted Name in Diagnostic Imaging Solutions

www.admaccess.com