

FirstPET/CT™

*Providing the Earliest Clinical Diagnosis...
Saving Lives*

Facility Based PET/CT Imaging

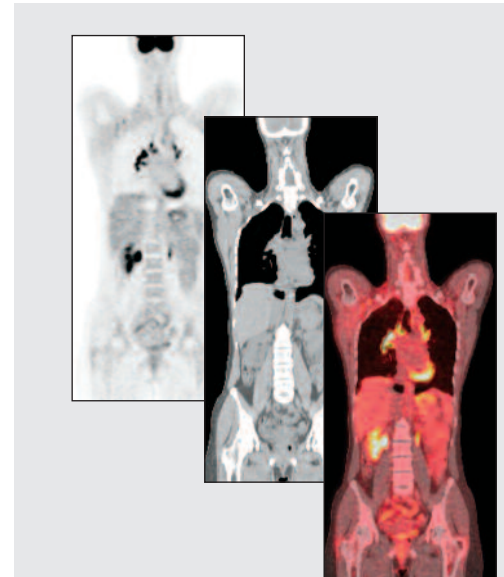
ADM is a pioneer in providing PET/CT. When PET/CT imaging first became available for Medicare reimbursement, ADM operated more centers than any other corporation. Expertise and experience makes FirstPET/CT the logical choice when considering adding this technology to your facility.

FirstPET/CT will enhance the convenience, quality of care and treatment for your patients. The end result is a more timely and accurate diagnosis which leads to increased effectiveness of therapies.

Positron Emission Tomography (PET) is an imaging test that can be useful in the management of patients with certain cancers. Conventional radiography, such as CT or MR, provides exquisite detail of a patient's anatomy, while PET depicts the metabolic activity of tissues in the body. With an imaging resolution as low as 5 - 10 mm in very active disease, PET provides valuable additional information to assist in the management of patients with many types of disease. For example, PET assists clinicians with the:

- Early detection of lesions not visible by CT or MR
- Evaluation of lesions treated with chemo- or radiotherapy
- Differentiation between inactive necrotic tissue or scar and lesions
- Characterization of lesions that are indeterminate on x-ray images

PET/CT combines the functional information from a positron emission tomography (PET) exam with the anatomical information from a computed tomography (CT) exam into one single exam.



American Diagnostic Medicine



Most Trusted Name in Diagnostic Imaging Solutions

www.admaccess.com • 1.800.262.9645 Ext. 106



FirstPET/CT™

Providing the Earliest Clinical Diagnosis... Saving Lives

FirstPET/CT is a total comprehensive program that provides state-of-the-art PET/CT imaging in your facility. With this complete turnkey program you can now establish an in-house PET/CT program without the usual financial risks, staffing costs and administrative headaches. Let our professionals show you how it can be done.

FEATURES:

- State-of-the-art Diagnostic Imaging Equipment
- Shipping & Installation
- Facility Site Planning
- All other necessary equipment and software for scanning
- Registered technologists
- Record keeping in compliance for State, Federal and JCAHO regulations
- All necessary licensing for operating equipment
- Training in coding and billing

BENEFITS:

- Improved patient care and convenience
- Improved image quality & patient throughput
- Increase revenue
- No major investment
- No additional hiring of personnel
- Technology upgrade flexible
- Full maintenance and emergency service, including parts and labor
- QA program that monitors and reports image quality and equipment reliability on a daily, monthly, and semi annual basis

CURRENT APPLICATIONS AND REIMBURSABLE PROCEDURES

Cardiology - In cardiology, PET enables physicians to screen for coronary artery disease, to assess flow rates and flow reserve and to distinguish viable from nonviable myocardium for bypass and transplant candidates.

Oncology - In oncology, PET permits a physician to accurately image many organs of the body with a single scan in order to detect malignancy. PET has demonstrated usefulness in cost-effective whole-body metastatic surveys, avoiding biopsies. Lung Cancer, Colorectal Cancer, Melanoma, Lymphoma, Head and Neck Cancer, Breast, Brain Tumors, Ovarian, Cervical, and Uterine Cancer, Bladder Cancer, Gastroesophageal Cancer, Hepatocellular Cancer, Muscle and Connective Tissue Tumors, Prostate Cancer, Renal Cell Cancer, Testicular Cancer, Thyroid Cancer, Unknown Primary Tumor

Neurology - In neurology, PET provides information for assessing various neurological diseases such as Alzheimer's disease and other dementias, Parkinson's disease, and Huntington's disease. Additionally, it localizes epileptic foci for qualifying and identifying the site requiring surgical intervention. *as of March 2008

American Diagnostic Medicine



Most Trusted Name in Diagnostic Imaging Solutions

www.admaccess.com • 1.800.262.9645 Ext. 106